



### SURVEY RESULTS

Fond du Lac/Ozaukee/Sheboygan & Washinton County

SGP 5 - Driving Rt

14 July 2016

RT 3768

Surveyors: W Mueller & R Holzrichter

Route Length: 52.09 km

4 Species Encountered

### Time & Weather

Time (PM)

8:47      10:01

Temperature (F)

70.0      68.0

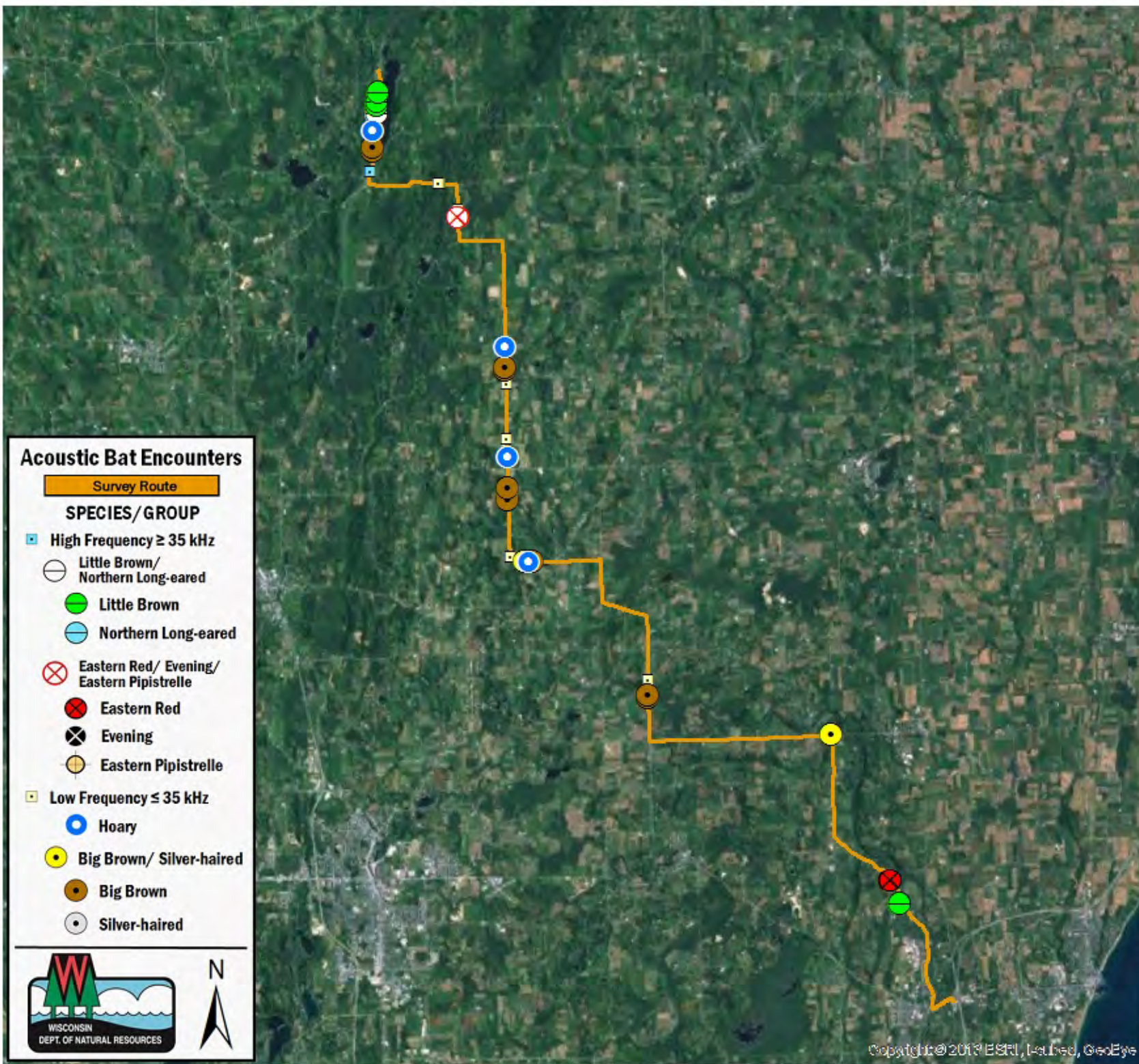
Relative Humidity (%)

60.0      60.0

Wind (m/s)

2.1      2.5

Notes: Survey completed S to N.

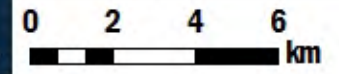


### Acoustic Bat Encounters

Survey Route

#### SPECIES/GROUP

- High Frequency  $\geq 35$  kHz
  - Little Brown/Northern Long-eared
    - Little Brown
    - Northern Long-eared
  - ⊗ Eastern Red/ Evening/ Eastern Pipistrelle
    - ⊗ Eastern Red
    - ⊗ Evening
    - Eastern Pipistrelle
- Low Frequency  $\leq 35$  kHz
  - Hoary
  - Big Brown/ Silver-haired
  - Big Brown
  - Silver-haired



Copyright © 2013 ESRI, Inc., GeoEye