

# Acoustic Bat Encounters

Survey Route

## SPECIES/GROUP

High Frequency  $\geq 35$  kHz

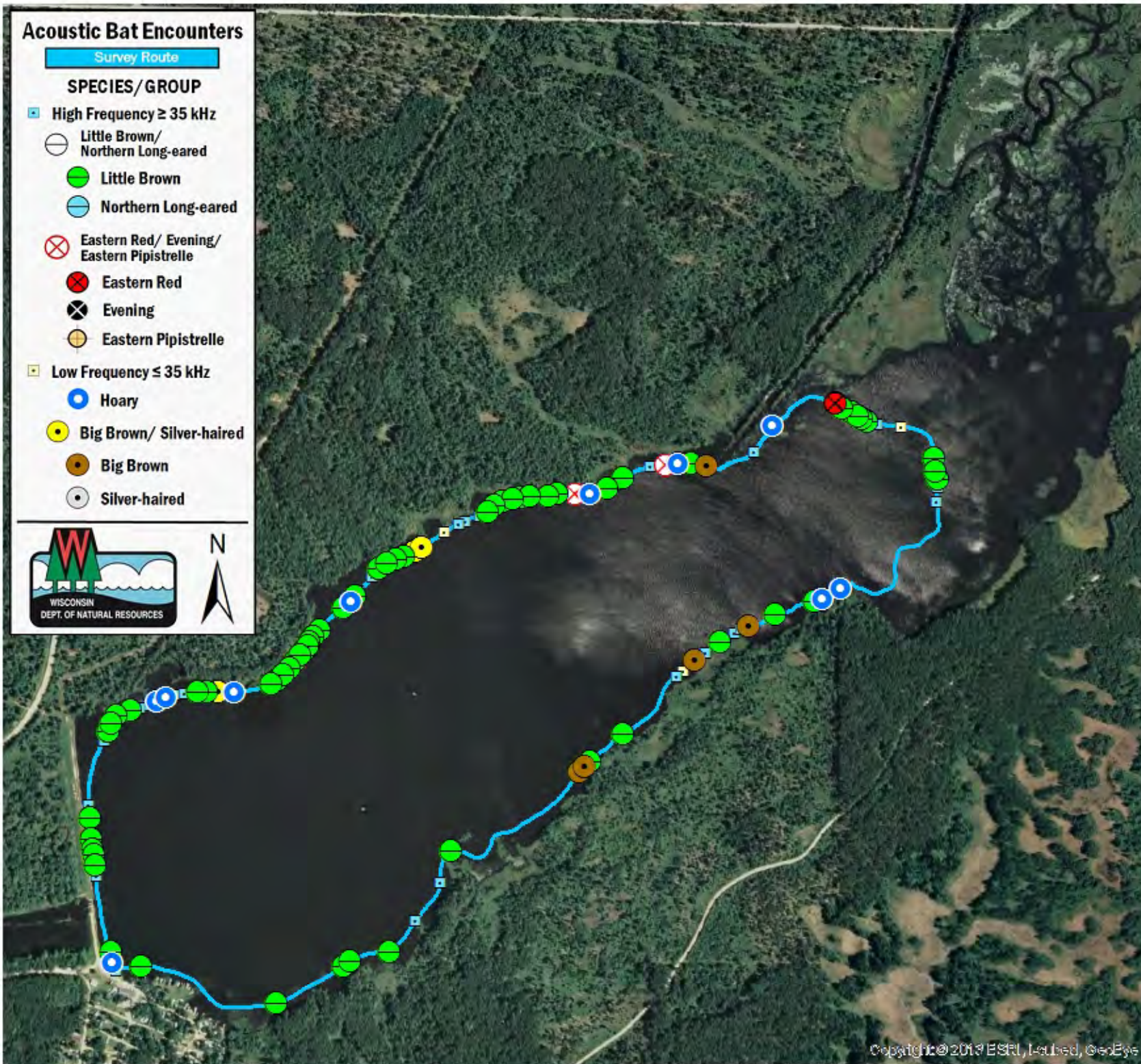
- Little Brown/  
Northern Long-eared
- Little Brown
- Northern Long-eared

Eastern Red/ Evening/  
Eastern Pipistrelle

- Eastern Red
- Evening
- Eastern Pipistrelle

Low Frequency  $\leq 35$  kHz

- Hoary
- Big Brown/ Silver-haired
- Big Brown
- Silver-haired



## SURVEY RESULTS

Juneau County

Eagle Nest Flowage

16 July 2016

RT 3770

Surveyors: B Johnston

Route Length: 5.07 km

4 Species Encountered

101.01 Passes/Detector Hr

### Time & Weather

Time (PM)

9:18      10:37

Temperature (F)

68.0      66.0

Relative Humidity (%)

70.0      71.0

Wind (m/s)

2.7      2.2

Notes: BATLAS Rt.

Survey completed  
counter-clockwise.

