

Acoustic Bat Encounters

Survey Route

SPECIES/GROUP

High Frequency ≥ 35 kHz

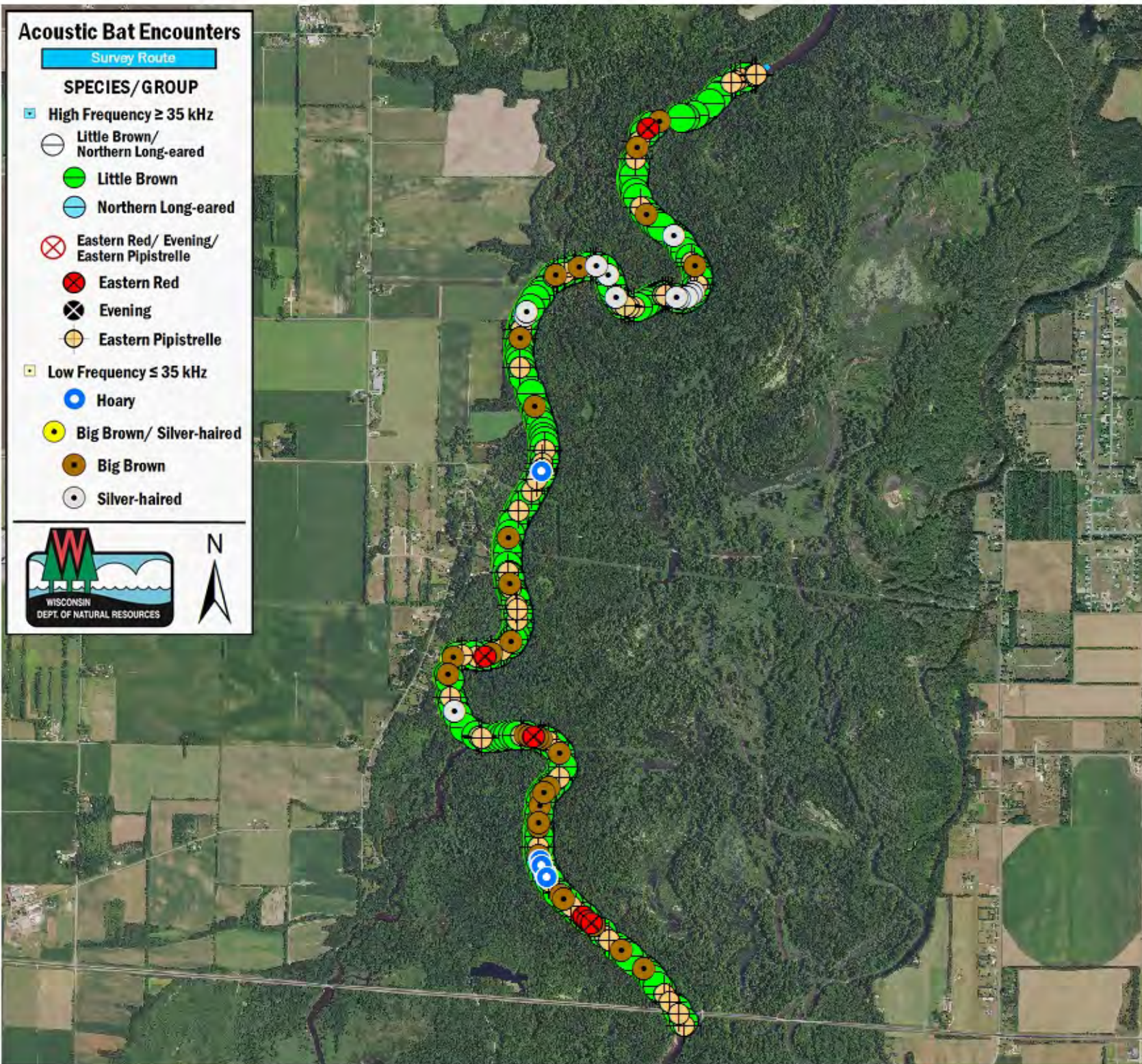
- Little Brown/
Northern Long-eared
- Little Brown
- Northern Long-eared

Eastern Red/ Evening/ Eastern Pipistrelle

- Eastern Red
- Evening
- Eastern Pipistrelle

Low Frequency ≤ 35 kHz

- Hoary
- Big Brown/ Silver-haired
- Big Brown
- Silver-haired



SURVEY RESULTS

La Crosse/Trempealeau County

Black River 6

17 July 2016

RT 3771

Surveyors: A Badje

Route Length: 8.38 km

6 Species Encountered

399.29 Passes/Detector Hr

Time & Weather

Time (PM)

9:18 10:42

Temperature (F)

77.5 73.9

Relative Humidity (%)

69.0 79.0

Wind (m/s)

3.4 3.1

Notes: BATLAS Rt.
Survey completed N to S.

