

# Acoustic Bat Encounters

Survey Route

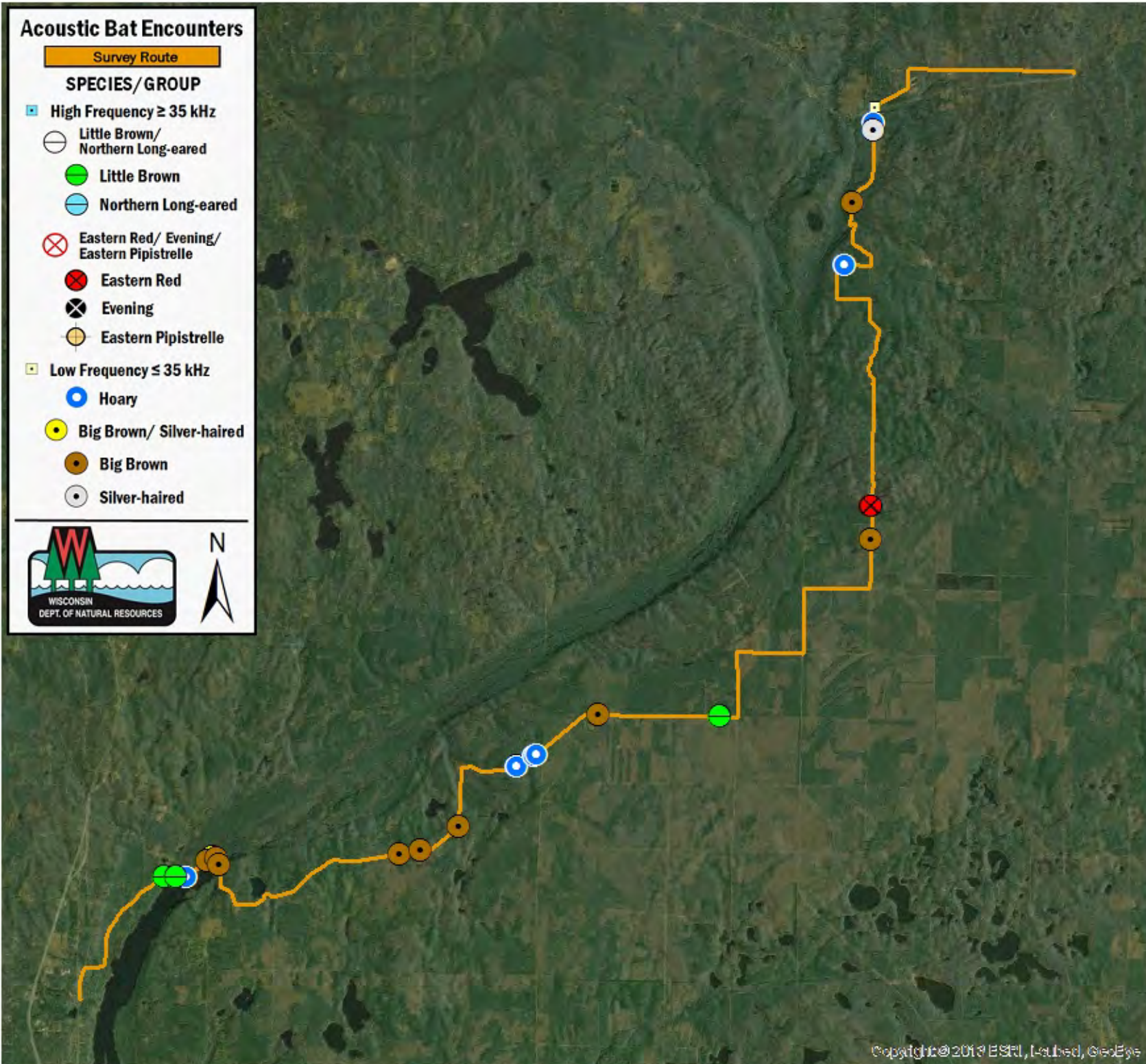
## SPECIES/GROUP

### High Frequency $\geq 35$ kHz

- Little Brown/  
Northern Long-eared
- Little Brown
- Northern Long-eared
- ⊗ Eastern Red/ Evening/  
Eastern Pipistrelle
- Eastern Red
- ⊗ Evening
- Eastern Pipistrelle

### Low Frequency $\leq 35$ kHz

- Hoary
- Big Brown/ Silver-haired
- Big Brown
- Silver-haired



## SURVEY RESULTS

Bayfield/Douglas County

NWS 2 - Driving Rt

9 July 2016

RT 3776

Surveyors: A Ledin & M Dietrich

Route Length: 47.54 km

5 Species Encountered

### Time & Weather

Time (PM)

9:35      11:27

Temperature (F)

70.0      60.0

Relative Humidity (%)

80.0      50.0

Wind (m/s)

2.2      0.0

Notes: Survey completed SW to NE.

