



SURVEY RESULTS

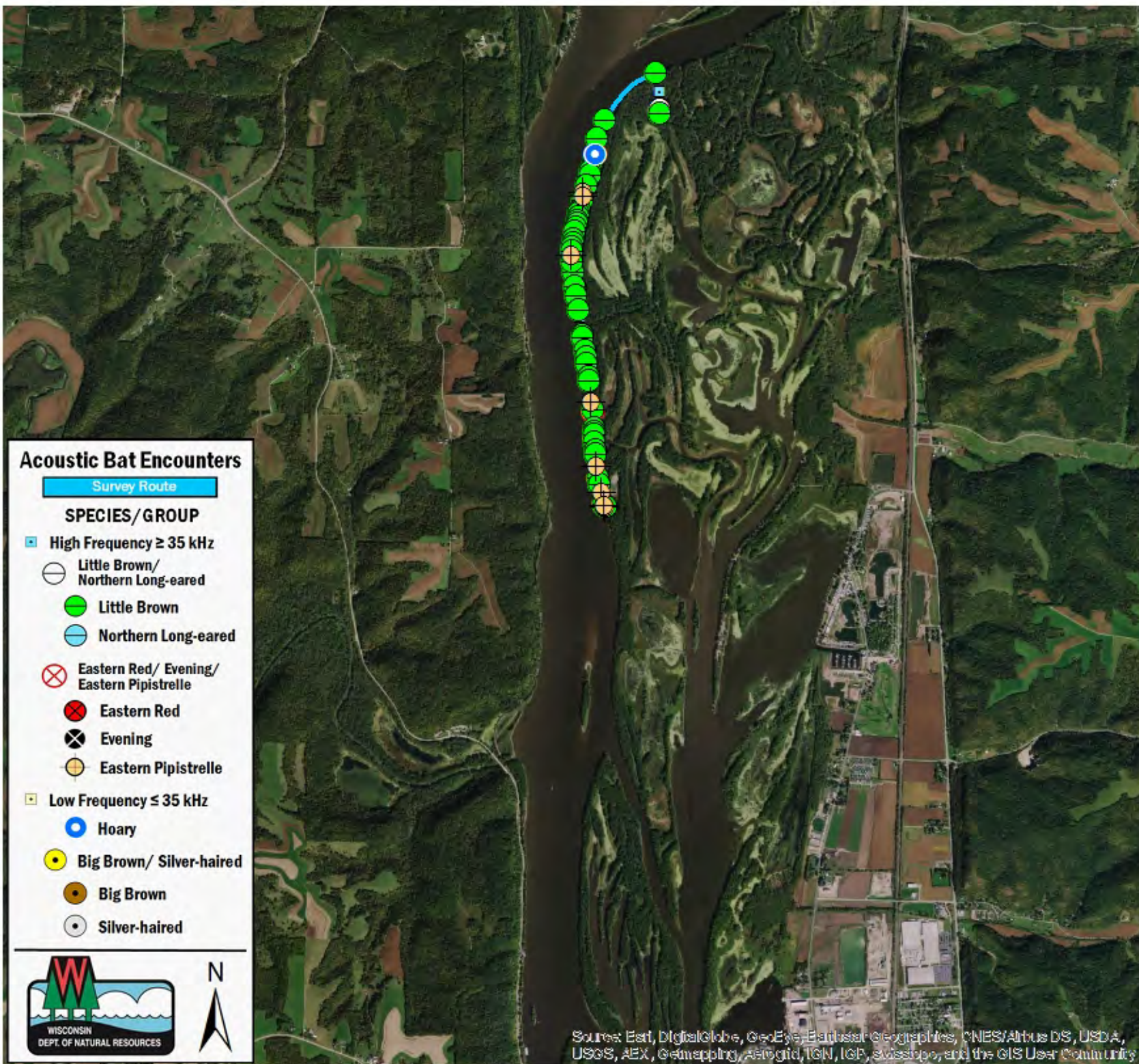
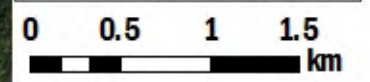
Crawford County
Mississippi River 7
21 July 2016
RT 3814

Surveyors: A Badje
Route Length: 3.87 km
3 Species Encountered
153.53 Passes/Detector Hr

Time & Weather

Time (PM)	
9:10	9:44
Temperature (F)	
76.5	76.1
Relative Humidity (%)	
70.0	73.0
Wind (m/s)	
2.6	4.5

Notes: BATLAS Rt (partial attempt)
 Survey completed N to S.
 Stopped survey due to T-Storm.



Acoustic Bat Encounters

- Survey Route**
- SPECIES/GROUP**
- ▣ High Frequency ≥ 35 kHz
 - Little Brown/Northern Long-eared
 - Little Brown
 - Northern Long-eared
 - ⊗ Eastern Red/ Evening/ Eastern Pipistrelle
 - ⊗ Eastern Red
 - ⊗ Evening
 - ⊗ Eastern Pipistrelle
 - ▣ Low Frequency ≤ 35 kHz
 - Hoary
 - Big Brown/ Silver-haired
 - Big Brown
 - Silver-haired



Source: Esri, DigitalGlobe, GeoEye, Earthstar Geographics, CNES/Airbus DS, USDA, USGS, AEX, Geomatics, AeroGRID, IGN, ICF, swisstopo, and the GIS User Community