

# Acoustic Bat Encounters

Survey Route

## SPECIES/GROUP

### High Frequency $\geq 35$ kHz

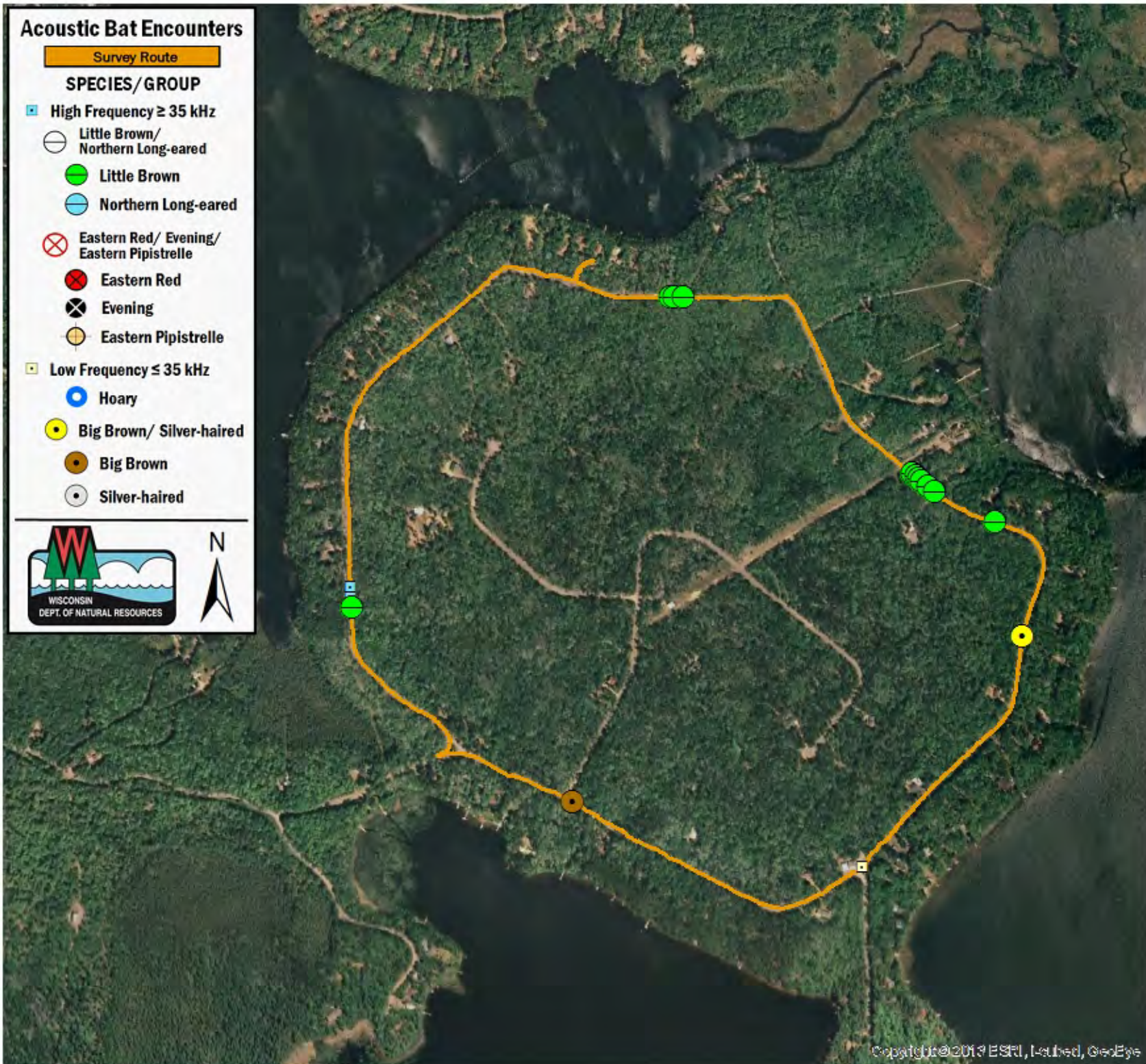
- Little Brown/  
Northern Long-eared
- Little Brown
- Northern Long-eared

### Eastern Red/ Evening/ Eastern Pipistrelle

- Eastern Red
- Evening
- Eastern Pipistrelle

### Low Frequency $\leq 35$ kHz

- Hoary
- Big Brown/ Silver-haired
- Big Brown
- Silver-haired



## SURVEY RESULTS

Oneida County

Blakely Circle

21 July 2016

RT 3828

Surveyors: K Schluter

Route Length: 4.5 km

2 Species Encountered

### Time & Weather

Time (PM)

9:12      10:13

Temperature (F)

85.0      84.0

Relative Humidity (%)

89.0      90.0

Wind (m/s)

2.2      2.2

Notes: Bo-di-lac Rd

