



SURVEY RESULTS

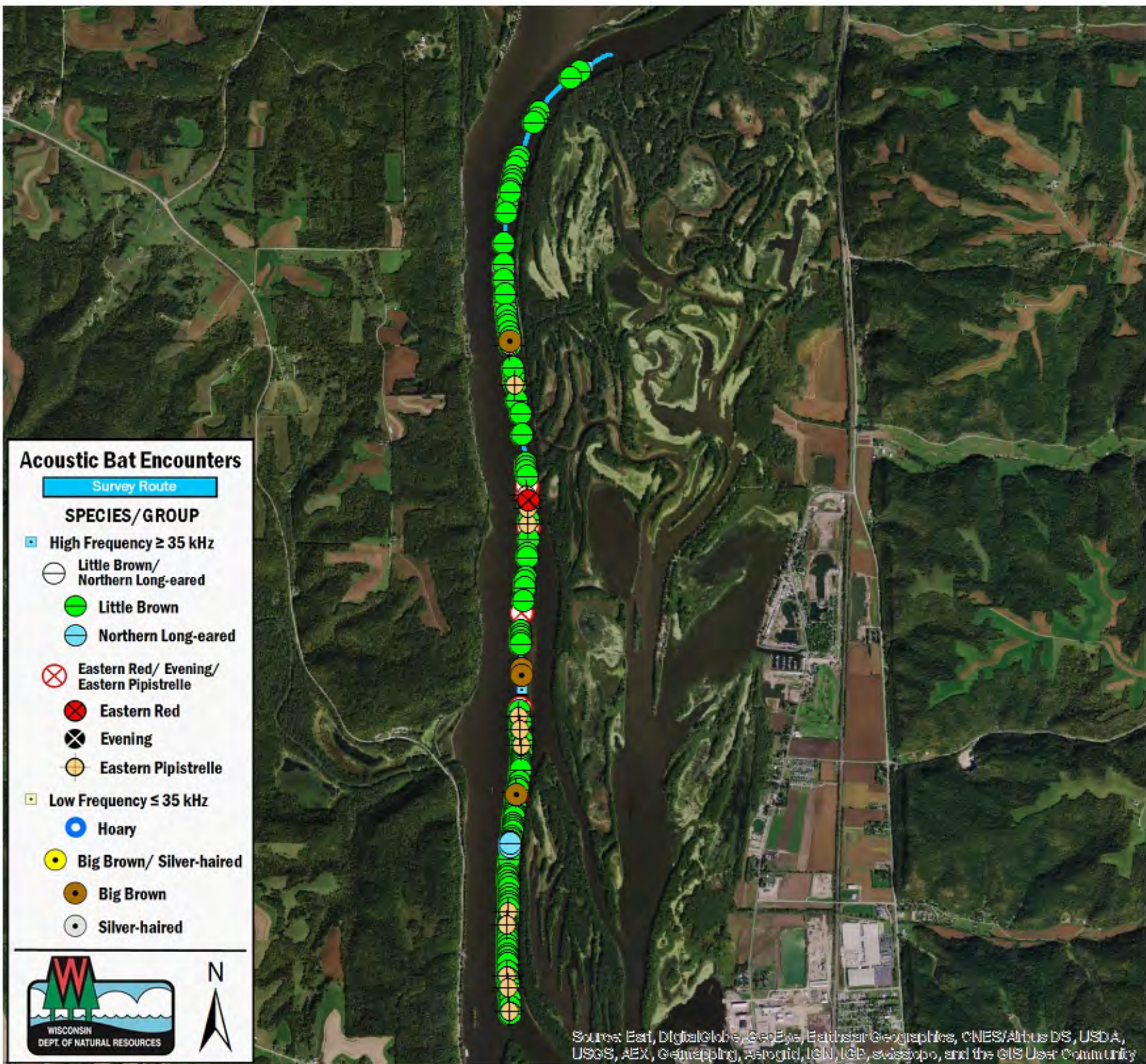
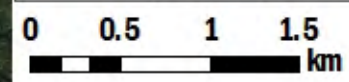
Crawford County
Mississippi River 7
24 July 2016
RT 3829

Surveyors: A Badje
Route Length: 8.24 km
5 Species Encountered
195.21 Passes/Detector Hr

Time & Weather

Time (PM)	
9:07	10:18
Temperature (F)	
75.1	72.3
Relative Humidity (%)	
70.0	76.0
Wind (m/s)	
3.4	2.1

Notes: BATLAS Rt.
 Survey completed N to S.



Acoustic Bat Encounters

- Survey Route**
- SPECIES/GROUP**
- ▣ High Frequency ≥ 35 kHz
 - Little Brown/Northern Long-eared
 - Little Brown
 - Northern Long-eared
 - ⊗ Eastern Red/ Evening/ Eastern Pipistrelle
 - ⊗ Eastern Red
 - ⊗ Evening
 - ⊗ Eastern Pipistrelle
 - ▣ Low Frequency ≤ 35 kHz
 - Hoary
 - Big Brown/ Silver-haired
 - Big Brown
 - Silver-haired



Source: Esri, DigitalGlobe, GeoEye, Earthstar Geographics, CNES/Airbus DS, USDA, USGS, AEX, Geoplanning, Swisstopo, IGN, ICB, swissopo, and the GIS User Community