

# Acoustic Bat Encounters

Survey Route

## SPECIES/GROUP

High Frequency  $\geq 35$  kHz

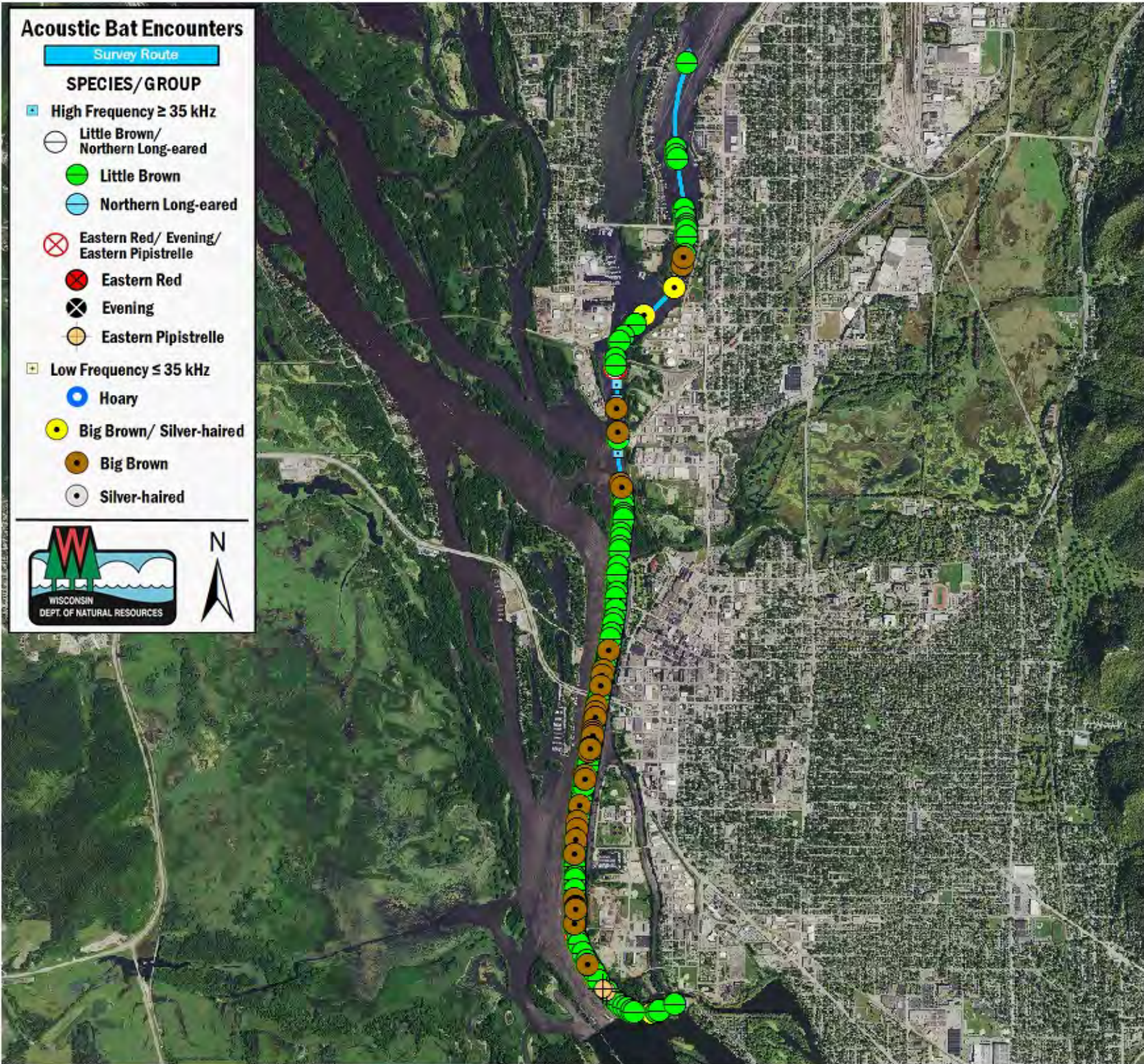
- Little Brown/  
Northern Long-eared
- Little Brown
- Northern Long-eared

Eastern Red/ Evening/  
Eastern Pipistrelle

- Eastern Red
- Evening
- Eastern Pipistrelle

Low Frequency  $\leq 35$  kHz

- Hoary
- Big Brown/ Silver-haired
- Big Brown
- Silver-haired



## SURVEY RESULTS

La Crosse County  
Mississippi River 2  
25 July 2016  
RT 3833

Surveyors: A Badje  
Route Length: 8.16 km  
3 Species Encountered  
283.56 Passes/Detector Hr

### Time & Weather

Time (PM)	
9:08	10:21
Temperature (F)	
77.0	73.0
Relative Humidity (%)	
68.0	80.0
Wind (m/s)	
0.0	2.1

Notes: BATLAS Rt.  
Survey completed N to S.

