

Acoustic Bat Encounters

Survey Route

SPECIES/GROUP

High Frequency ≥ 35 kHz

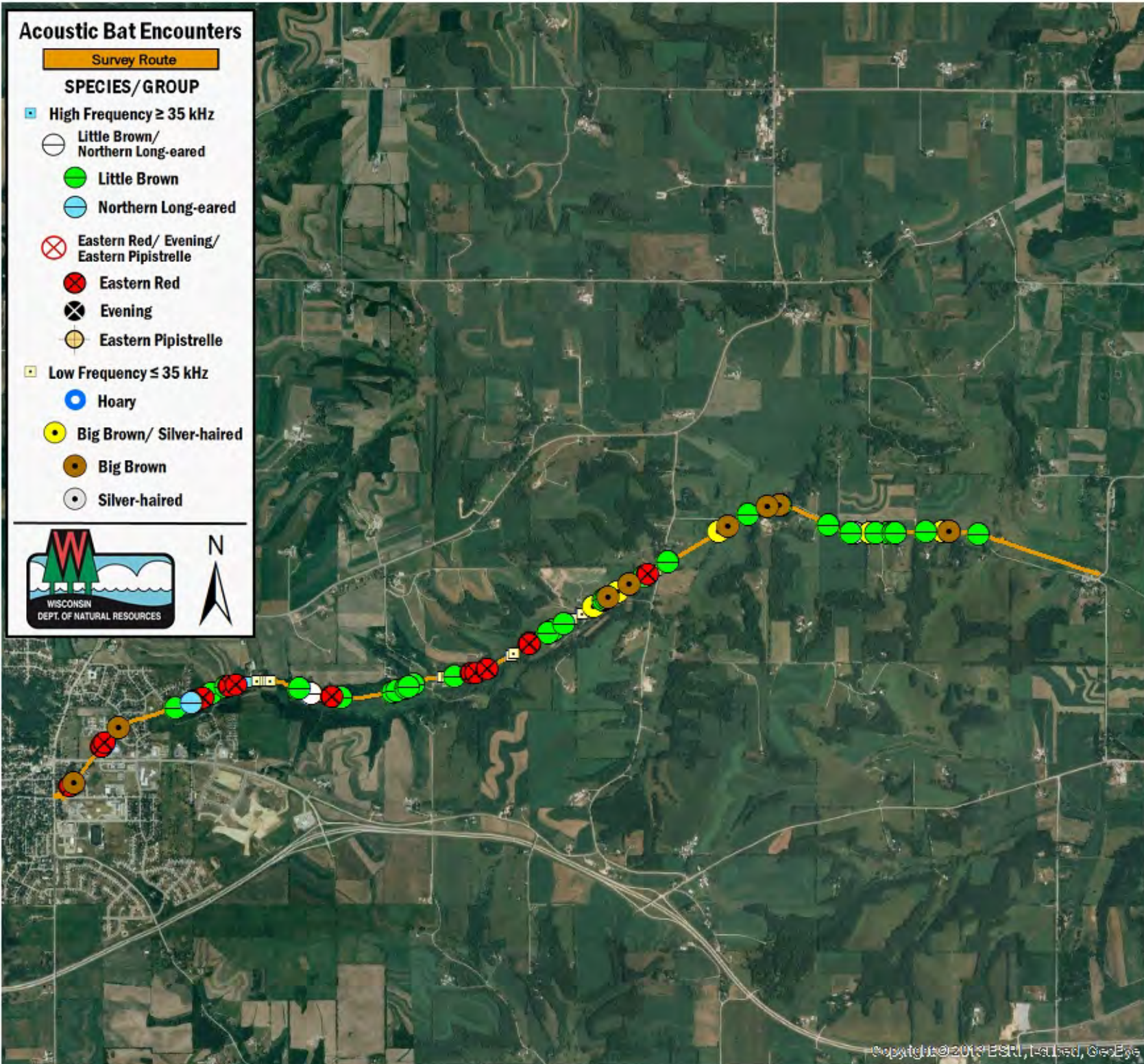
- Little Brown/
Northern Long-eared
- Little Brown
- Northern Long-eared

Eastern Red/ Evening/
Eastern Pipistrelle

- ⊗ Eastern Red
- ⊗ Evening
- Eastern Pipistrelle

Low Frequency ≤ 35 kHz

- Hoary
- Big Brown/ Silver-haired
- Big Brown
- Silver-haired



SURVEY RESULTS

Dane County

Military Ridge Trail 1

25 July 2016

RT 3835

Surveyors: J Durbin

Route Length: 9.88 km

4 Species Encountered

64.75 Passes/ Detector Hr

Time & Weather

Time (PM)

9:23 11:04

Temperature (F)

75.0 70.0

Relative Humidity (%)

79.0 83.0

Wind (m/s)

0.0 0.0

Notes: BATLAS Rt.
Survey completed W to E.

