

# Acoustic Bat Encounters

Survey Route

## SPECIES/GROUP

### High Frequency $\geq 35$ kHz

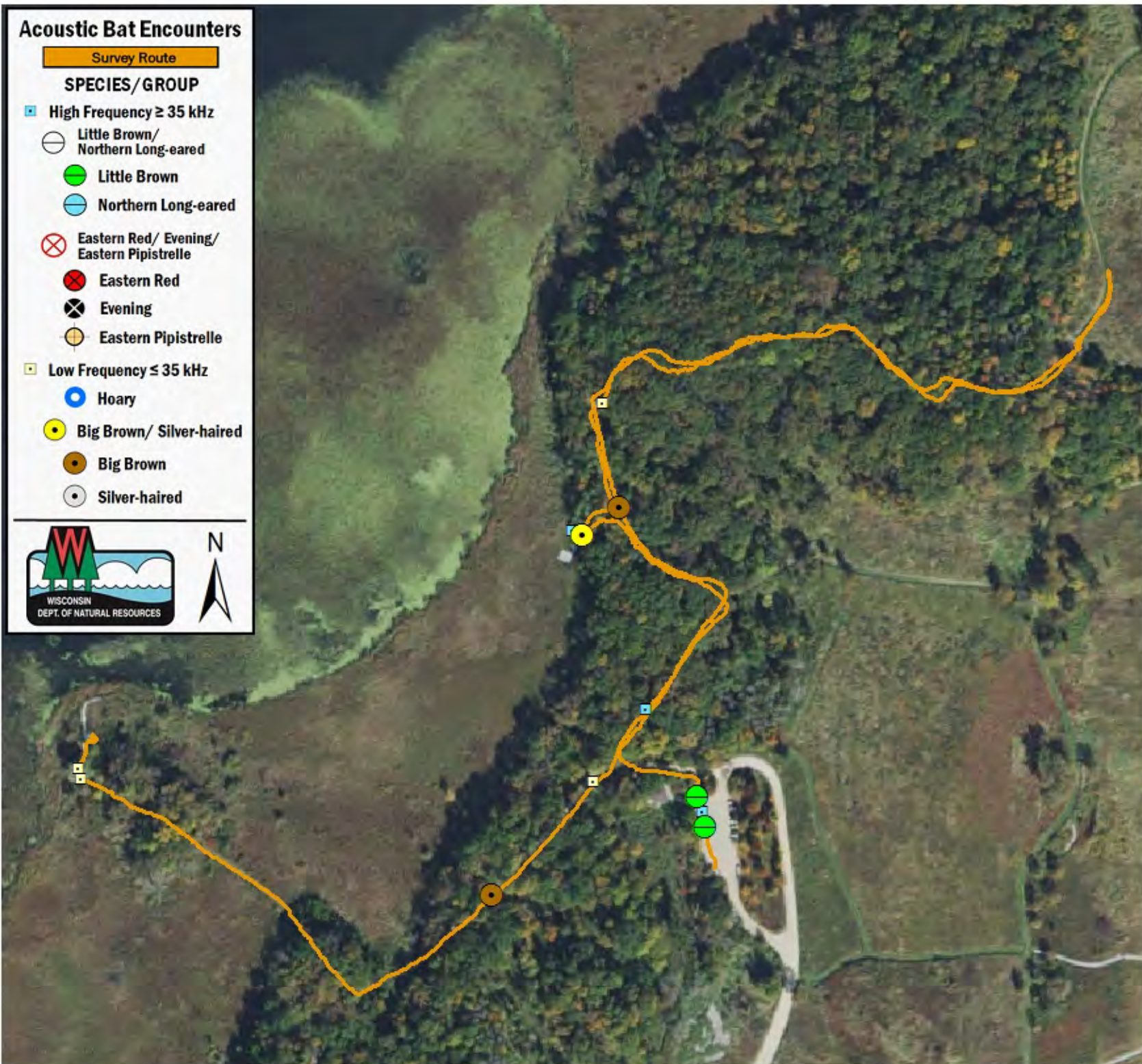
- Little Brown/  
Northern Long-eared
- Little Brown
- Northern Long-eared

### Eastern Red/ Evening/ Eastern Pipistrelle

- Eastern Red
- Evening
- Eastern Pipistrelle

### Low Frequency $\leq 35$ kHz

- Hoary
- Big Brown/ Silver-haired
- Big Brown
- Silver-haired



## SURVEY RESULTS

Dane County  
Cherokee Marsh Park  
8 August 2016  
RT 3879  
Surveyors: S Chojnacki  
Route Length: 2.2 km  
2 Species Encountered

### Time & Weather

Time (PM)  
8:52      9:20

Temperature (F)  
74.0      74.0

Relative Humidity (%)  
64.0      64.0

Wind (m/s)  
0.0      0.0

Notes:

