

# Acoustic Bat Encounters

Survey Route

## SPECIES/GROUP

### High Frequency $\geq 35$ kHz

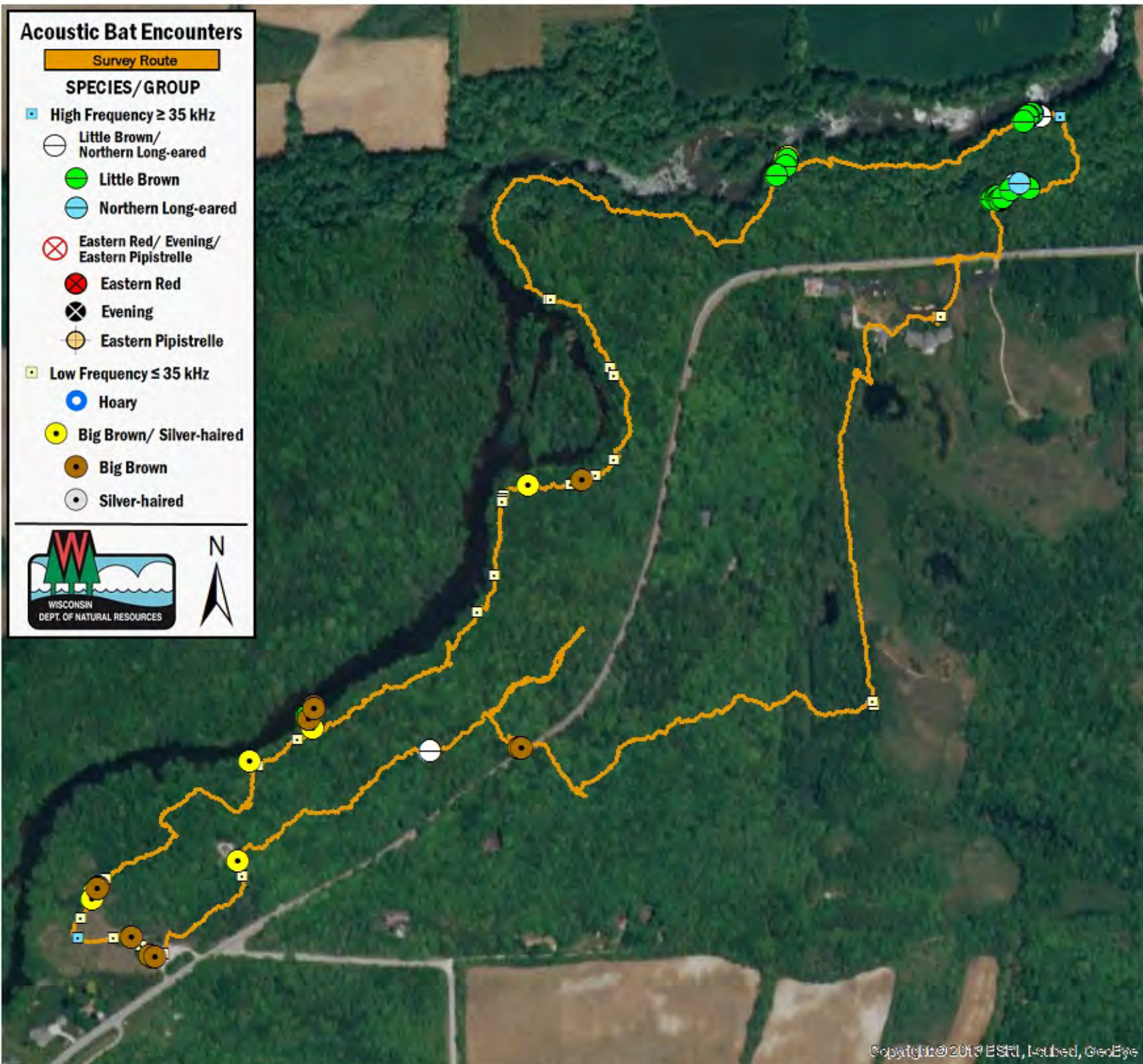
- Little Brown/  
Northern Long-eared
- Little Brown
- Northern Long-eared

### Eastern Red/ Evening/ Eastern Pipistrelle

- Eastern Red
- Evening
- Eastern Pipistrelle

### Low Frequency $\leq 35$ kHz

- Hoary
- Big Brown/ Silver-haired
- Big Brown
- Silver-haired



## SURVEY RESULTS

Ozaukee County  
Riveredge Nature Center  
30 August 2016  
RT 3897

Surveyors: T Pichler  
Route Length: 6.11 km  
3 Species Encountered

### Time & Weather

Time (PM)

8:00      9:00

Temperature (F)

71.6      71.6

Relative Humidity (%)

88.0      88.0

Wind (m/s)

2.1      2.1

Notes:

