



## SURVEY RESULTS

Iron County

Sister Lake

30 August 2016

RT 3900

Surveyors: C & P Brust

Route Length: 2.91 km

2 Species Encountered

### Time & Weather

Time (PM)

8:25      9:34

Temperature (F)

59.0      57.0

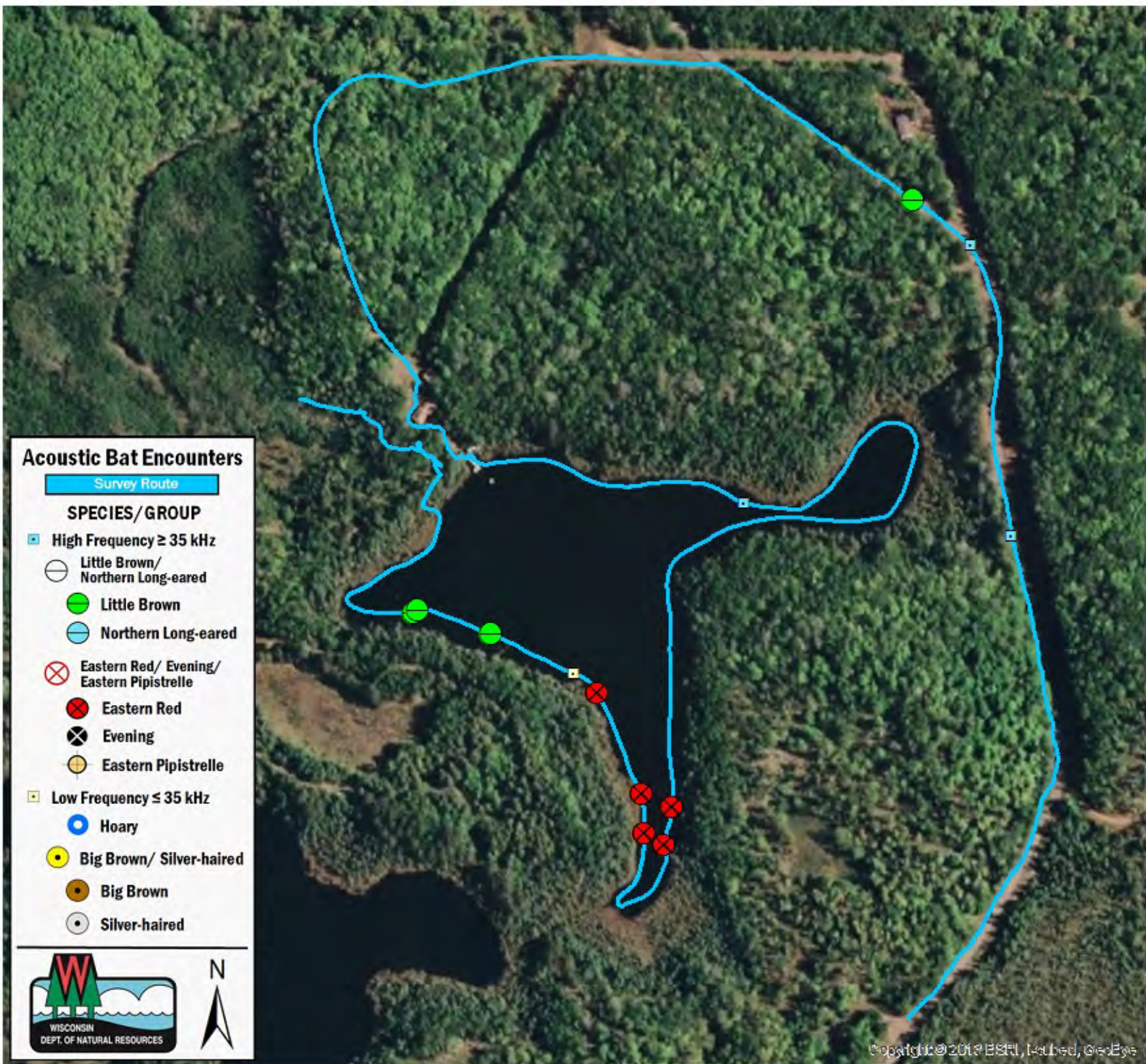
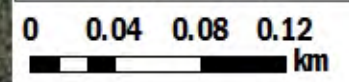
Relative Humidity (%)

85.0      90.0

Wind (m/s)

0.0      0.0

Notes: Flowage Rd



### Acoustic Bat Encounters

Survey Route

#### SPECIES/GROUP

High Frequency  $\geq 35$  kHz

Little Brown/  
Northern Long-eared

Little Brown

Northern Long-eared

Eastern Red/ Evening/  
Eastern Pipistrelle

Eastern Red

Evening

Eastern Pipistrelle

Low Frequency  $\leq 35$  kHz

Hoary

Big Brown/ Silver-haired

Big Brown

Silver-haired



Copyright © 2016 BSR, Inc., GredEye