

# Acoustic Bat Encounters

Survey Route

## SPECIES/GROUP

### High Frequency $\geq 35$ kHz

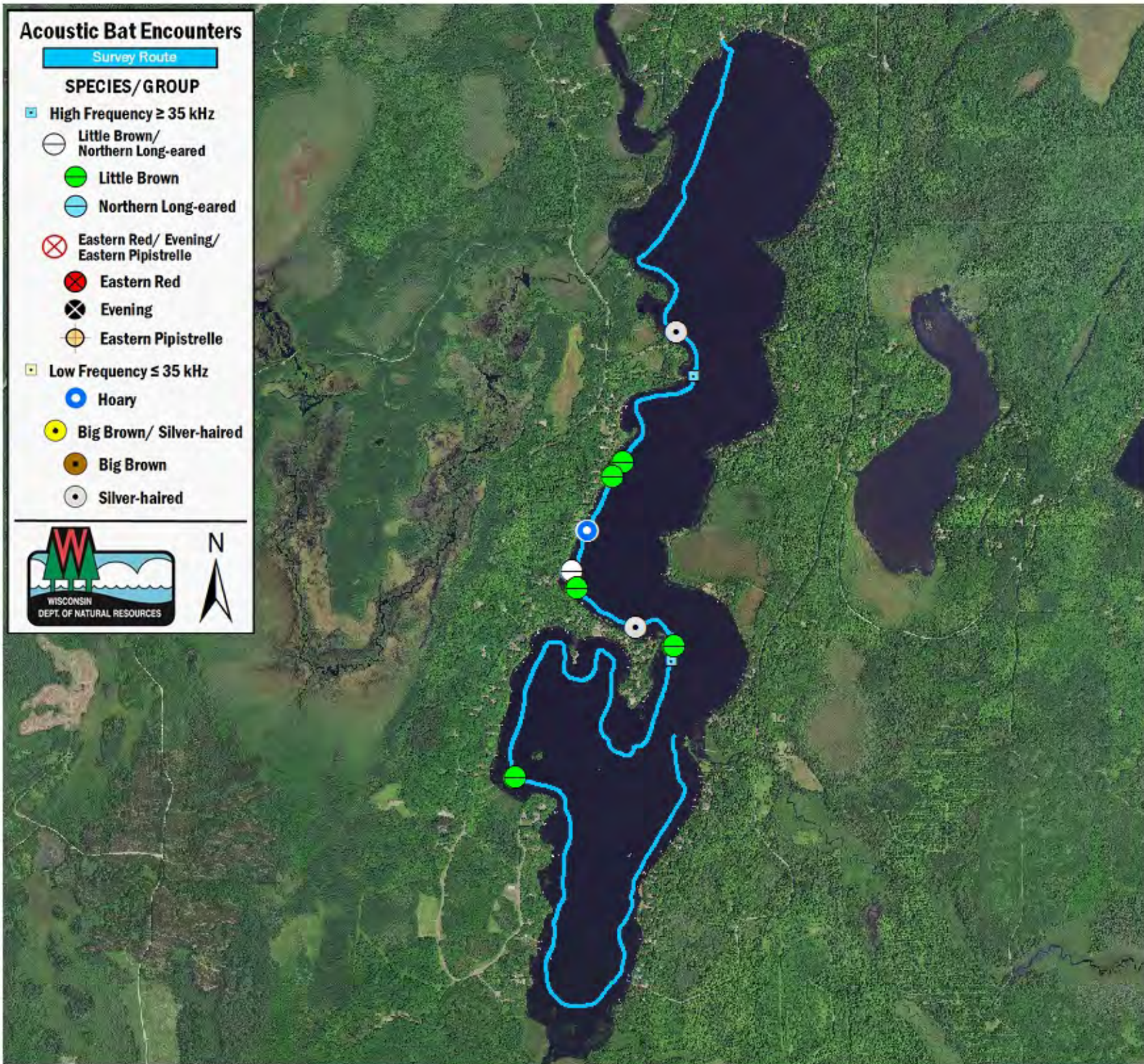
- Little Brown/  
Northern Long-eared
- Little Brown
- Northern Long-eared

### Eastern Red/ Evening/ Eastern Pipistrelle

- ⊗ Eastern Red
- ⊗ Evening
- ⊗ Eastern Pipistrelle

### Low Frequency $\leq 35$ kHz

- Hoary
- Big Brown/ Silver-haired
- Big Brown
- Silver-haired



## SURVEY RESULTS

Oneida/Vilas County  
Squaw Lake  
25 August 2016  
RT 3902

Surveyors: E Marshall  
& L Johnson  
Route Length: 9.03 km  
3 Species Encountered

### Time & Weather

Time (PM)	
8:54	10:11
Temperature (F)	
61.9	59.4
Relative Humidity (%)	
72.0	80.0
Wind (m/s)	
2.1	1.6

Notes:

