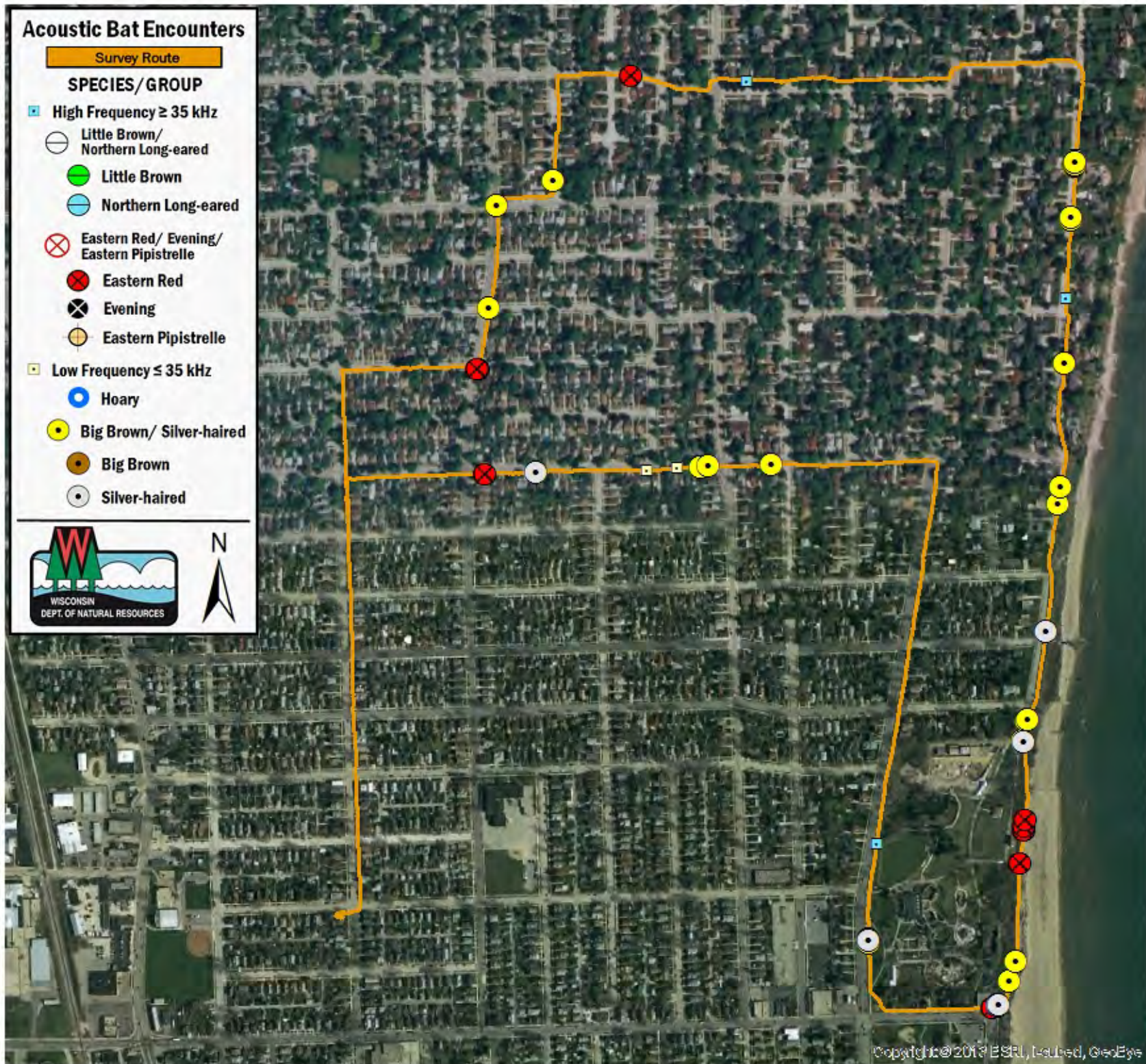


Acoustic Bat Encounters

Survey Route

SPECIES/GROUP

- High Frequency ≥ 35 kHz
 - Little Brown/
Northern Long-eared
 - Little Brown
 - Northern Long-eared
 - ⊗ Eastern Red/ Evening/
Eastern Pipistrelle
 - ⊗ Eastern Red
 - ⊗ Evening
 - ⊗ Eastern Pipistrelle
- Low Frequency ≤ 35 kHz
 - Hoary
 - Big Brown/ Silver-haired
 - Big Brown
 - Silver-haired



SURVEY RESULTS

Racine County

Lake Front

26 September 2016

RT 3938

Surveyors: S Mason
Route Length: 6.08 km
0 Species Encountered

Time & Weather

Time (PM)

7:15 8:30

Temperature (F)

63.0 60.0

Relative Humidity (%)

34.0 41.0

Wind (m/s)

3.6 3.1

Notes: Racine, WI

