

Acoustic Bat Encounters

Survey Route

SPECIES/GROUP

High Frequency ≥ 35 kHz

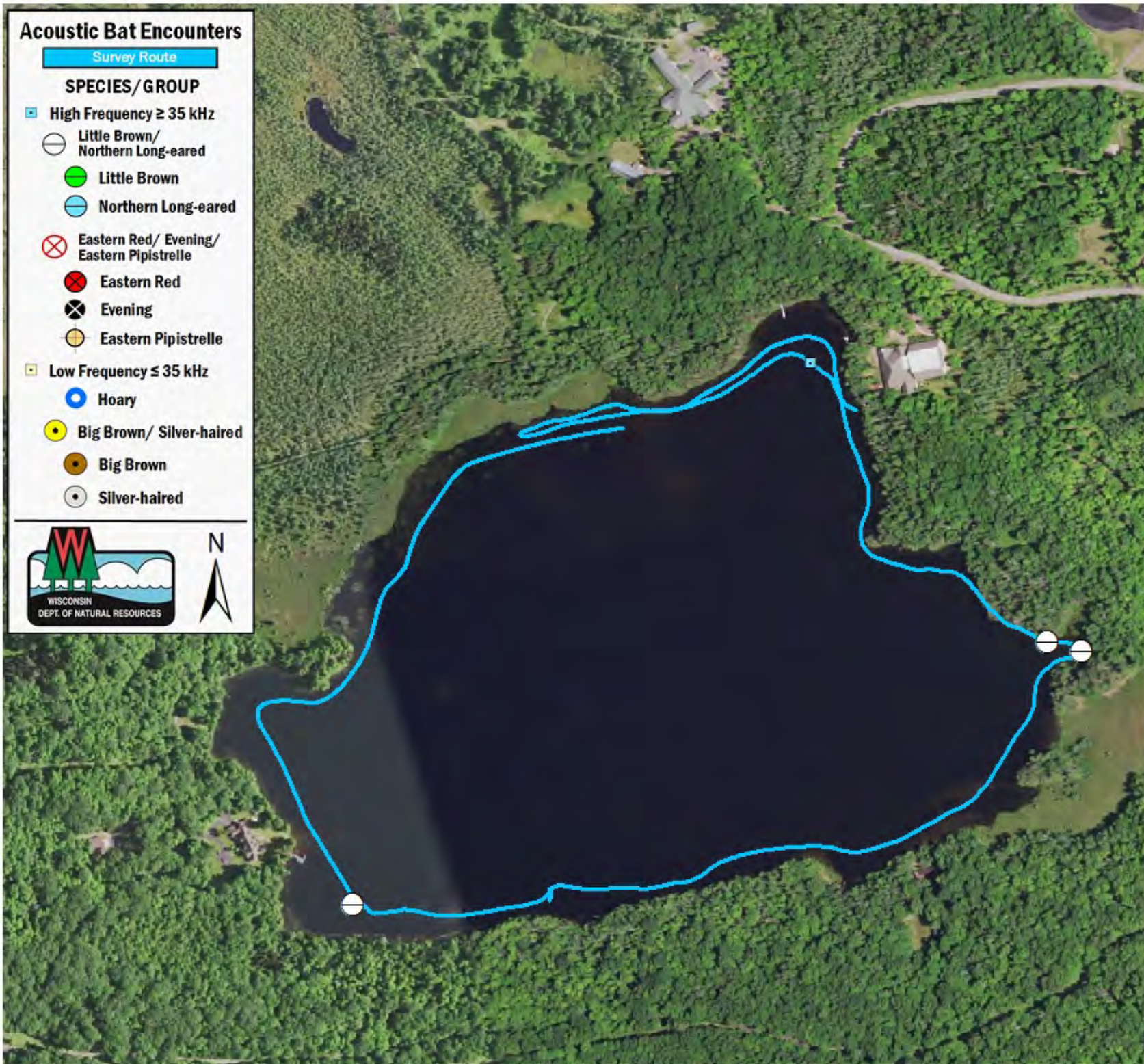
- Little Brown/
Northern Long-eared
- Little Brown
- Northern Long-eared

Eastern Red/ Evening/ Eastern Pipistrelle

- Eastern Red
- Evening
- Eastern Pipistrelle

Low Frequency ≤ 35 kHz

- Hoary
- Big Brown/ Silver-haired
- Big Brown
- Silver-haired



SURVEY RESULTS

Vilas County
 Big Donahue Lake
 16 June 2016
 RT 3944

Surveyors: R Eady,
 P DeLong & Conserve School
 Route Length: 2.97 km
 0 Species Encountered

Time & Weather

Time (PM)	
9:15	10:15
Temperature (F)	
65.0	61.0
Relative Humidity (%)	
77.0	86.0
Wind (m/s)	
0.0	0.0

Notes:

