

Acoustic Bat Encounters

Survey Route

SPECIES/GROUP

High Frequency ≥ 35 kHz

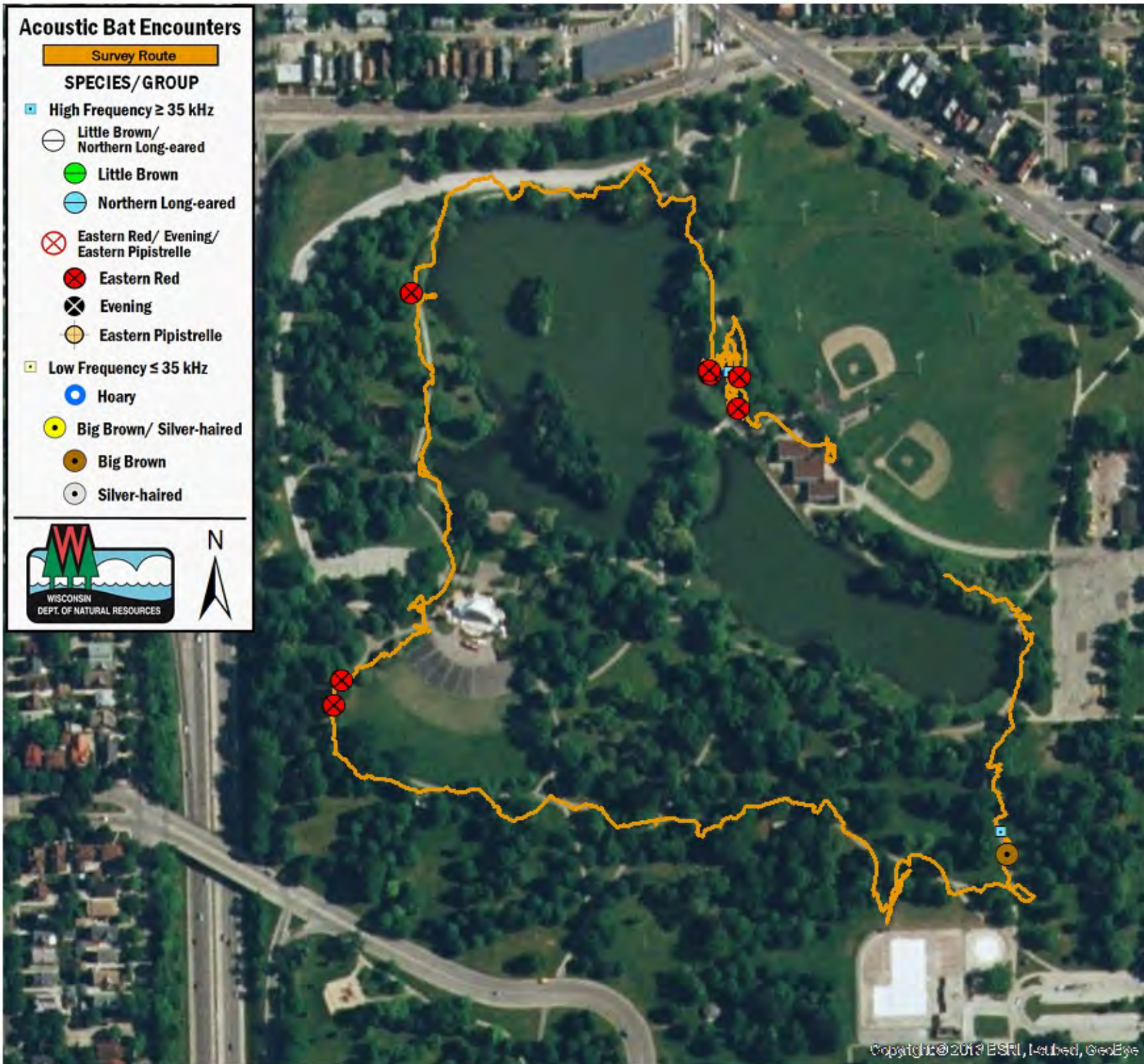
- Little Brown/
Northern Long-eared
- Little Brown
- Northern Long-eared

Eastern Red/ Evening/
Eastern Pipistrelle

- ⊗ Eastern Red
- ⊗ Evening
- ⊗ Eastern Pipistrelle

Low Frequency ≤ 35 kHz

- Hoary
- Big Brown/ Silver-haired
- Big Brown
- Silver-haired



SURVEY RESULTS

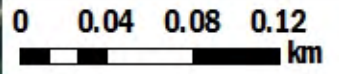
Milwaukee County
Washington Park
24 August 2016
RT 3960

Surveyors: J Callaghan, J Orlando,
P Rebholz, A Hontz, K Degenhardt,
J Zoher, Y Salgado & A Aries
Route Length: 2.78
2 Species Encountered

Time & Weather

Time (PM)	
7:56	8:51
Temperature (F)	
83.0	81.0
Relative Humidity (%)	
67.0	72.0
Wind (m/s)	
3.1	0.0

Notes: Urban Ecology Center.



Copyright © 2013 ESRI, Leubed, GeoEye