

# Acoustic Bat Encounters

Survey Route

## SPECIES/GROUP

### High Frequency $\geq 35$ kHz

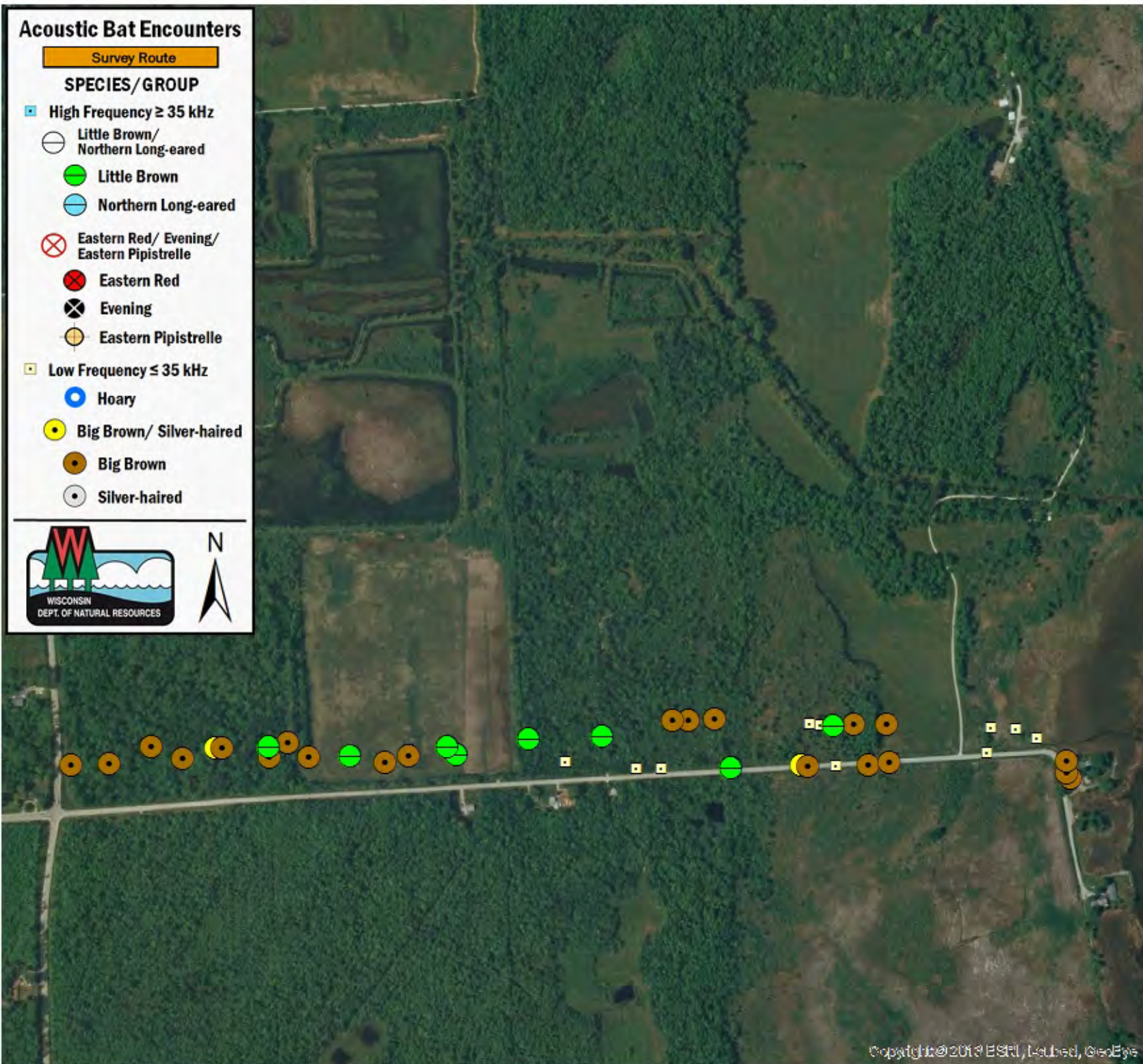
- Little Brown/  
Northern Long-eared
- Little Brown
- Northern Long-eared

### Eastern Red/ Evening/ Eastern Pipistrelle

- ⊗ Eastern Red
- ⊗ Evening
- Eastern Pipistrelle

### Low Frequency $\leq 35$ kHz

- Hoary
- Big Brown/ Silver-haired
- Big Brown
- Silver-haired



## SURVEY RESULTS

Brown County

Lineville Rd

7 June 2016

RT 3980

Surveyors: J Shrovnal

Route Length: NA

2 Species Encountered

### Time & Weather

Time (PM)

10:14      10:57

Temperature (F)

53.1      52.0

Relative Humidity (%)

80.0      83.0

Wind (m/s)

0.0      0.0

Notes: Missing GPS Route File.

