



# Wisconsin Citizen-based Monitoring Network Newsletter

Winter 2019-2020

## Conference Update

March 20-21, 2020

Manitowoc

[Register Now](#)



View Full Conference Details at

<http://wiatri.net/cbm/Conference/Conf2020.cfm>

### Registration

[Registration](#) is open now. Note that online registration is being provided by Riveredge Nature Center, but the conference will be held at the Holiday Inn in Manitowoc, *not at Riveredge*. Registration is first come, first serve, and spots are limited. Reserve your spot today! Early Bird Registration will close on February 23 or when capacity is met. There will be an additional \$10 charge for registrations completed February 24 through March 9.

### Early Bird Registration Details

Date	Cost	Programming	Meals
Friday, March 20 (Full Day)	\$35	Keynote Speaker: Dr. Karen Oberhauser Concurrent Presentations & Workshops Equipment Swap & Door Prizes Networking Session Awards Banquet	Morning Snack Lunch Afternoon Snack Dinner
Saturday, March 21 (Half Day)	\$15	Concurrent Presentations & Workshops Equipment Swap & Door Prizes	Breakfast Morning Snack

## Conference Update, continued

### Keynote Speaker

Dr. Karen Oberhauser, Director of the UW-Madison Arboretum will be the keynote speaker. Dr. Oberhauser is the founder and director of the Monarch Larva Monitoring Project, a national citizen science effort. She has also developed and led numerous programs that help educators use citizen science in classrooms and nonformal learning environments.

### Project Slam

The fast-paced and fun Project Slam will provide quick introductions to many of Wisconsin's major citizen-based monitoring projects. Project leaders will have two minutes to provide an overview of their project and tell attendees how they can learn more at the conference.

### Talks & Workshops

We've lined up 34 terrific talks from researchers, project leaders, volunteers, nature center staff and educators. Each talk will be 15 minutes total (a 12-minute presentation followed by 3 minutes for questions and answers). One-hour workshops will be offered on both Friday and Saturday. These provide attendees with a chance for more in-depth training. See all talk titles and summaries [here](#).

### Equipment Swap

Exchange your old monitoring equipment for new-to-you treasures! If you have equipment that you don't use any longer, like field guides, waders, binoculars, or flagging stakes, don't let it go to waste. Bring them to the conference to share with others in our citizen-based monitoring community!

### Educational Tables

A limited number of tables are available for educational exhibits and displays on a first-come, first-served basis. Displays should be up both

Friday and Saturday, and tables should be staffed at minimum during the breaks. Conference registration is required to host a table. To reserve a table, email [eva.lewandowski@wisconsin.gov](mailto:eva.lewandowski@wisconsin.gov).

### Door Prizes

We'll be handing out great door prizes to some lucky attendees on Friday and Saturday. If you have a CBM-related item that you'd like to contribute as a conference door prize, please email [eva.lewandowski@wisconsin.gov](mailto:eva.lewandowski@wisconsin.gov).

### Scholarships

A limited number of scholarships are available for registration costs, to assist individuals for whom attending the conference presents an economic hardship. Details on how to apply are on the [conference website](#).

### Venue and Lodging

Conference Location: [Holiday Inn Manitowoc](#), 4601 Calumet Avenue, Manitowoc

Overnight Accommodations: A block of rooms for March 20 has been reserved at the Holiday Inn Manitowoc until February 19, 2020, or when the block is filled. Conference participants will pay the nightly rate of \$109/night (not state rate eligible), plus taxes. Those who are state rate eligible will pay \$82/night for a single or \$92/night for a double. The hotel will provide the same room rates for 3 days pre- and post-conference.

When making a reservation, use the group code **DNR**. You can reserve rooms by calling the hotel direct **920-682-6000**, calling **800-Holiday** or by reserving a room [online](#).

### CBM Awards

Awards for outstanding achievement in citizen-based monitoring will be presented during Friday evening's awards banquet. Nominations for the CBM awards will open soon.

The Wisconsin Citizen-based Monitoring Network is a collaboration of individuals and organizations that works to improve the effectiveness of natural resource monitoring efforts through communications,

## Partner Updates

### Bat Roost Monitoring Report Released

209 volunteers with the Wisconsin DNR's bat roost monitoring program were hard at work over the summer counting bats in bat houses, silos, barns, and other structures. The 2019 Roost Monitoring Report shares the results of the Great Wisconsin Bat Count, daily emergence monitoring, and other efforts. Read the [report](#) online to get information on bat demographics, White Nose Syndrome, and more.

### New Damselfly Field Guide Available

A new addition of Damselflies of Minnesota, Wisconsin & Michigan has been published. The field guide was written by Bob DuBois, coordinator of the Wisconsin Odonata Survey, with photographs by Mike Reese, who is well

known for his citizen-based monitoring work with the website Wisconsin Butterflies and the Wisconsin Breeding Bird Atlas II. The updated field guide is an excellent resource for anyone interested in monitoring damselflies. It is available for purchase from many bookstores and online retailers.



## Research Roundup

### Madison Volunteers Locate Areas with Human-Canid Interactions

Researchers with UW-Madison's Urban Canid Project recently published a research paper in the journal Landscape and Urban Planning that evaluated the effectiveness of citizen-based monitoring to track the locations of urban canids, especially for management purposes. Volunteers throughout the Madison area submitted over 800 observations of coyotes and foxes to the project between 2015 and 2016.

The researchers compared the observations to data collected from radio collared canids in Madison. Data from citizen-based monitoring volunteers came predominantly from areas where people and canids overlapped, while the radio collars supported these sightings and also revealed more extensive ranges, including areas not frequently visited by people. While the volunteer data couldn't completely predict the true ranges of the foxes and coyotes, it was very good at predicting where people and canids were most likely to interact, which is important for land

management and neighborhood awareness. You can read the [full paper](#) online and learn more about the Urban Canid Project on their [website](#).

### Citizen Science Photos Capture New Lady Beetle Photos

The Asian lady beetle (*Harmonia axyridis*) is an invasive species found in much of the United States, including Wisconsin. Recently, researchers identified a previously unknown fungal parasite that infects the lady beetle. Using citizen science observations from the websites iNaturalist and BugGuide, a group of scientists compiled instances of the fungus on Asian lady beetles across the country. They found that there is a gap between the introduction of the beetles to an area and the appearance of the fungus on the beetles. They also noted new state records of the fungus, including a first record from Wisconsin in 2018. You can read the full research paper [online](#).

Have an update or announcement you'd like to share in our newsletter? Email [eva.lewandowski@wisconsin.gov](mailto:eva.lewandowski@wisconsin.gov).

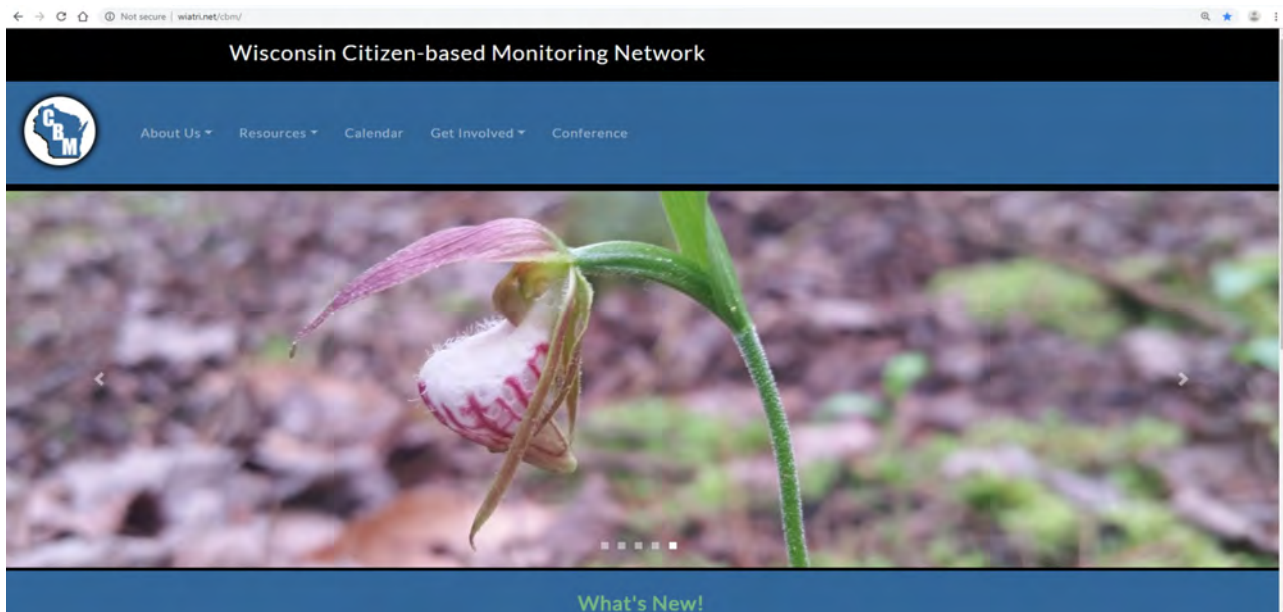
## Network Updates

### WCBM Website Gets New Look

The Wisconsin Citizen-based Monitoring Network’s website, [wiatri.net/cbm](http://wiatri.net/cbm), has been redesigned! The new look is mobile-friendly, easier to navigate, and incorporates new and old resources to support the CBM community. Visit our website to search the online directory of Wisconsin monitoring projects and groups, learn about the annual conference, find resources to start or manage a CBM program, and much more!

### New Video Introduces CBM

To commemorate the end of our 15th anniversary year in 2019, we created a video that provides an overview of citizen-based monitoring in Wisconsin. Many thanks to all the partners throughout the Network who provided amazing photos of the CBM efforts throughout the year! You are welcome to use the video whenever you need to introduce people to our state’s CBM efforts. View it on the WCBM Network’s [YouTube Channel](#).



Our website re-design provides a fresh new look.



A new video provides an introduction to Wisconsin citizen-based monitoring.

Stay in Touch with the WCBM Network

[wiatri.net/cbm](http://wiatri.net/cbm)



[Subscribe to WCBM updates](#)

Eva Lewandowski  
 Citizen-based Monitoring Coordinator  
 Eva.Lewandowski@Wisconsin.gov  
 608-264-6057